

# HAZELMERE

LOGISTICS ESTATE

Information Memorandum

189 Bushmead Road,  
Hazelmere WA







# Contents

Estate Overview	3
Connect. Innovate. Expand.	4
Location	5
A Big Investment. A Bright Future.	6
The Opportunity	7
Office Layouts	9
Market Leading Warehouse Design	10
Sustainability	11
Our Recent Experience	12



# Hazelmere Logistics Estate

Address	189 Bushmead Road, Hazelmere WA
Estate Area	9 hectares
Development	Industrial Warehouse
Warehouse Sustainability	Targeting 6 Star Green Rating
Availability	Q2 2024
Access	Frontage to Bushmead Road
Leasing	14,590sqm Warehouse Up To 1,000sqm Office 88 parking bays
Status	Construction Commenced

## Site Area Breakup

Site	Tenant	Site Area	GLA
A	McMahon Burnett Transport	44,479sqm	2,330sqm
B	Vortex Group of Companies	16,934sqm	3,958sqm
C	Development Site	28,675sqm	15,590sqm
Ranging in Size		5,000sqm-15,000sqm	
Office		350sqm-500sqm	
Car Parking Bays		88	
Total		90,088sqm	21,878sqm





# Connect. Innovate. Expand.

189 Bushmead Road, Hazelmere is strategically positioned for ultimate connectivity and is one of Perth's most significant logistics destinations. Offering unrivalled access, flexibility in design and a leading sustainable approach for maximised productivity across every touchpoint.

The total site area is 90,088sqm, with Building A and B fully occupied, and Building C with multiple options for your growing business.

This highly regarded central location is within close proximity to the Roe Highway, Great Eastern Highway Bypass and the Abernethy Road/Lloyd Street extension. With direct access to Midland Town Centre and the Kewdale Freight Terminal, this premier precinct presents an opportunity for untapped innovation and growth.

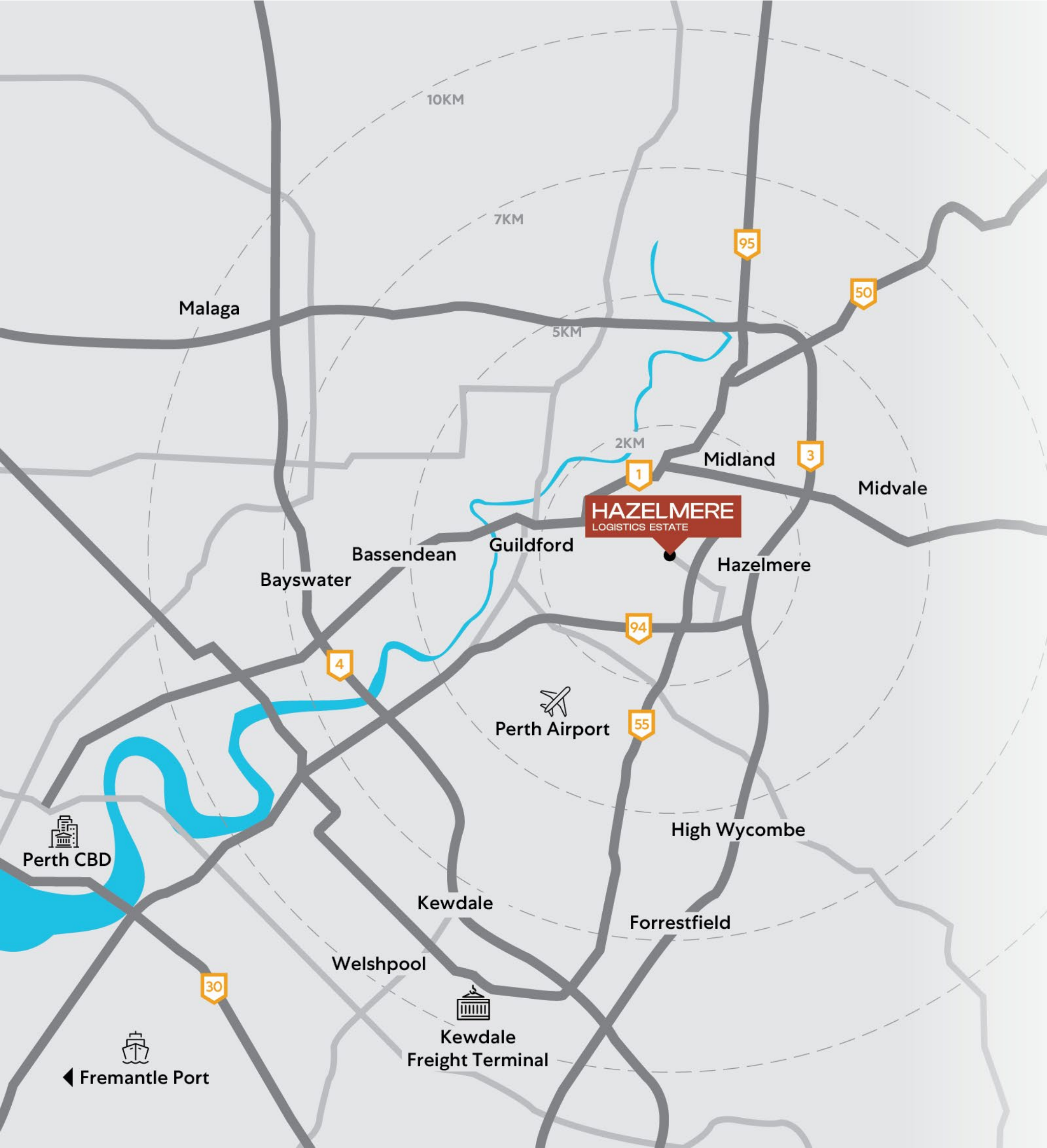




# Location

Hazelmere Logistics Estate in Perth is situated within the highly sought after industrial area of Hazelmere in East Perth. Located on Bushmead Road providing excellent access to major infrastructure and industrial hubs and within 20kms of Perth CBD and 8kms of Perth Airport. Located in an established industrial precinct that is currently benefiting from major infrastructure upgrades set for completion in 2024, the estate provides further enhanced connectivity to key transport networks including Great Eastern Highway and Abernethy Road.

You would be securing the final space on this coveted lot, nestled amongst great company including McMahon Transport and NFP. With quality neighbours including BTP, Linfox, Coca-Cola Amatil, AES, CTI Logistics, BGC Australia, Centurion, Toll, TL Engineering, Hanssen and ORH.



**20km**  
**25mins**

Perth CBD



**34km**  
**45mins**

Fremantle Port



**8km**  
**10mins**

Perth Airport



**12km**  
**15mins**

Kewdale Freight Terminal



# A Big Investment. A Bright Future.

**\$390m+**

The Federal and State Governments have committed an investment of \$390+ million upgrade to Roe Highway and Great Eastern Highway. Works have commenced and completion expected in 2024.

- Improved freight efficiency, connectivity and travel time
- Improved access to Perth Airport, Hazelmere and Forrestfield industrial areas, and the Midland railway workshops precinct
- Improved connectivity between major freight and infrastructure hubs
- Reduced costs for heavy vehicle operators, companies and commuters as a result of reduced travel time.

- Access to Great Eastern Highway Bypass from north
- Access to Great Easter Highway Bypass from south
- Roe Highway / Great Easter Highway Bypass Interchange
- Abernethy Road Upgrade
- Upgrade of Roe Highway between Talbot Road and Clayton Street





# The Opportunity

Create a tailored space to suit your business needs, with 15,590sqm allowing for a customised design with optimised efficiencies, operational cost-savings and flexibility at the forefront.

## Warehouse 1

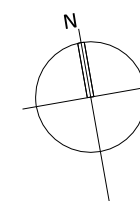
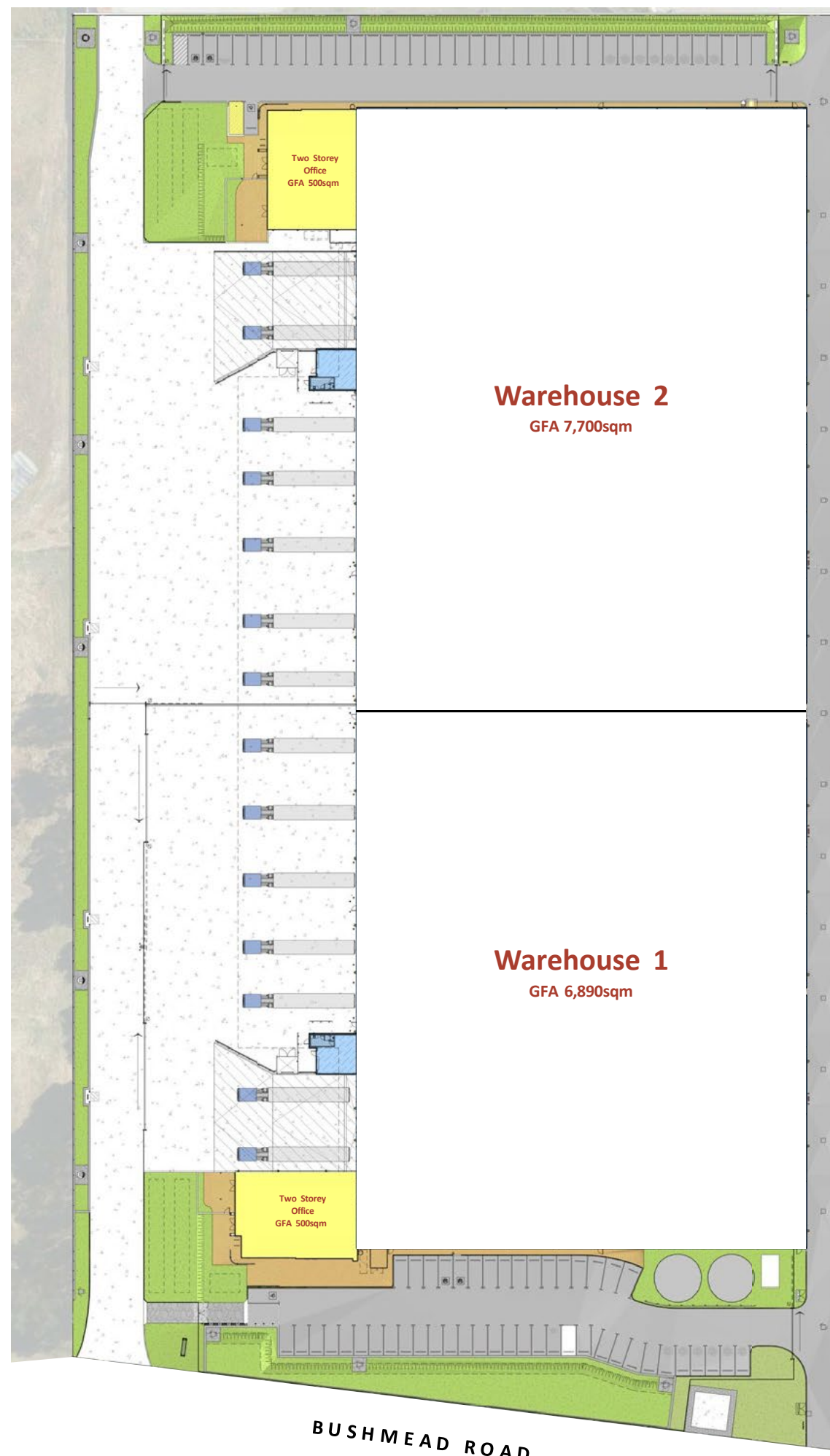
Total GFA	7,390sqm
Warehouse	6,890sqm
Two Storey Office	500sqm
Car Parking	48 Carspaces
Recessed Loading Docks	3
On-Grade Roller Doors	5

## Warehouse 2

Total GFA	8,200sqm
Warehouse	7,700sqm
Two Storey Office	500sqm
Car Parking	40 Carspaces
Recessed Loading Docks	3
On-Grade Roller Doors	5

## Total GFA 15,590sqm

Site Area	28,675sqm
Car Parking	88 Carspaces
Landscaping	2,900sqm





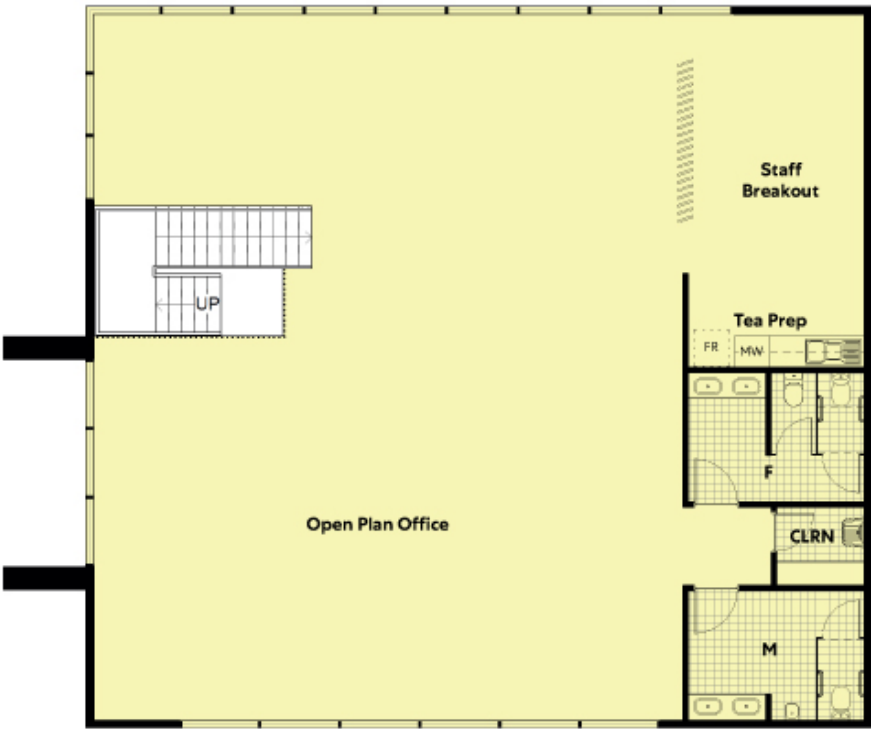




# Office Layouts



Ground Floor - GFA 300sqm



First Floor - GFA 199sqm





# Market Leading Warehouse Design

Create a tailored space to suit your business needs, allowing for a customised design with optimised efficiencies, operational cost-savings and flexibility at the forefront.

Designed by award winning **Meyer Shircore Architects** setting the benchmark for industrial and logistics facilities in the west.

- Broad range of uses including storage premises, warehouse and distribution centers, transport depots and wholesale supplies
- High-quality and specification build
- Flexible, tailored approach to provide a bespoke solution.



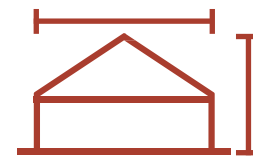
Led Lighting for Warehouse  
and Office



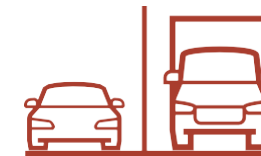
A-Grade Office Space



24/7 Operations



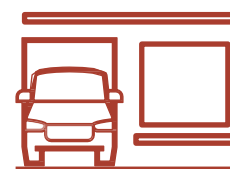
20m Wide Awnings  
14.6m Internal Roof Height



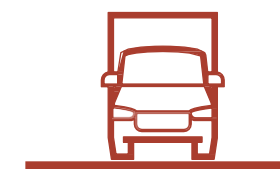
Separate Truck and Car  
Circulation



ESFR Sprinkler System



On-Grade and Recessed  
Dock Access



Wide Heavy-Duty  
Hardstand



B-Double Provisions



# Sustainability

Hazelmere Logistics Estate will incorporate a range of best practice sustainability features that meet our responsibilities towards improving energy conservation and environmental protection. Underpinning the development of Hazelmere is our commitment to reduced future operating costs.



Targeting 6 Star Green Star



Rooftop Solar



Rainwater Harvesting



Energy Efficient Lighting



Natural Ventilation



EV Charging



# Our Recent Experience



## Altitude Bankstown Airport

Murray Jones Drive, Bankstown Airport NSW Size:  
40 hectares

Total Tenancies: 162,000sqm

Occupiers: Allied Express, Beijer-Ref, e-Store,  
Hellmann Logistics, Sydney Freezers



## First Estate

585- 649 Mamre Rd Erskine Park, NSW  
Size: 118 hectares

Total tenancies: 250,000sqm

Occupiers: Snackbrands, NSW Fire & Rescue, Ceva  
Logistics, Dats, IMCD, N&A Fruit



## TheYARDS

649-763 Mamre Road, Orchard Hills NSW Size:  
77 hectares

Total tenancies: 400,000sqm

Occupiers: TTI, Ardex



# For Leasing Enquiries



**Hayden Dick**

[hayden.dick@colliers.com](mailto:hayden.dick@colliers.com)  
0438 941 660

**Sam Hammond**

[sam.hammond@colliers.com](mailto:sam.hammond@colliers.com)  
0413 664 247



**Brett Mathanda**

[brett.mathanda@jll.com](mailto:brett.mathanda@jll.com)  
0433 022 907

**Matthew Brunsdon**

[matthew.brunsdon@jll.com](mailto:matthew.brunsdon@jll.com)  
0406 227 380

## BARINGS

Barings is a US\$347+ billion\* global investment manager sourcing differentiated opportunities and building long-term portfolios across public and private fixed income, real estate, and specialist equity markets. With investment professionals based in North America, Europe and Asia Pacific, the firm, a subsidiary of MassMutual, aims to serve its clients, communities and employees, and is committed to sustainable practices and responsible investment.

\*As of September 30, 2023

To learn more about our capabilities, visit  
**[aure.baring.com](https://aure.baring.com)**



# HAZELMERE

## LOGISTICS ESTATE

To view the 3D walkthrough of this estate visit  
[hazelmerelogisticsestate.com.au](https://hazelmerelogisticsestate.com.au)

Disclaimer: Neither the building owners or their agents, make any representations or warranty that the information contained in this document is accurate and not misleading at the date of preparation nor does either of them accept any liability for any harm, loss, cost or damage arising from the use of, or reliance on the information by any person. Any prospective tenant should not rely on information in this document as statement or representations of fact. After the date of preparation, the facts on which the information contained in this document is based may change. Any prospective tenant must satisfy itself by inspection, enquiry or otherwise as to the accuracy and comprehensiveness of the information and is invited to do so. Correct as at October 2023.